

Connecting the BLU-3, BLU-6, sw9012US and sw9015US

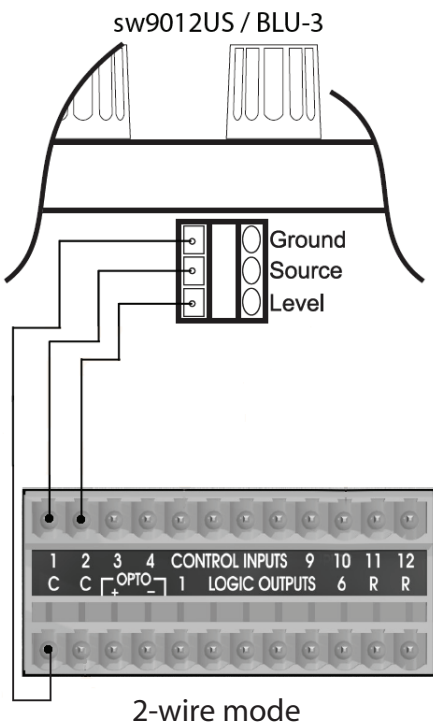
Soundweb™ London

The BLU-3 and BLU-6 are resistor based controls that connect to the Control Inputs on the back of a Soundweb device. The BLU-3 and BLU-6 are UK standard switch plate dimensions. The sw9012US and sw9015US are the same controls in US switch plate dimensions.



The BLU-3 and sw9012US have the same controls; a five position rotary selector switch and a rotary potentiometer. These controls require 3-conductor wire to connect back to the Control Inputs on the Soundweb device.

The BLU-6 and sw9015US have the same controls; an eight position rotary selector switch and an Up / Down button pair. These controls require 4-conductor wire to connect back to the Control Inputs on the Soundweb device.



On the BLU-3 there are connections labeled; GND, 1 and 2. The GND terminal is connected back to the 'C' or Common terminal on the Control Inputs of the Soundweb device. The '1' terminal is for the Source Select and is connected back to a numbered Control Input on the Soundweb device. The '2' terminal is for the Level and is connected back to a different numbered Control Input on the Soundweb device. Each Soundweb London chassis can support connections for up to six BLU-3 or sw9012US controllers.

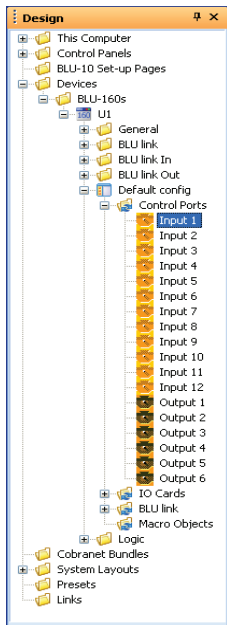
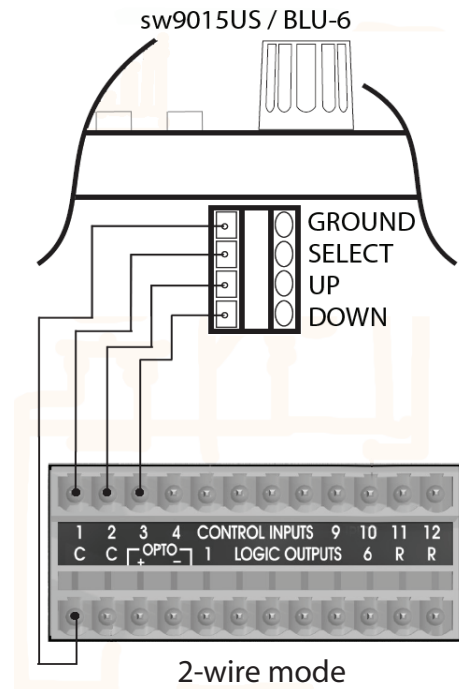


Connecting the BLU-3, BLU-6, sw9012US and sw9015US



On the BLU-6 there are connections labeled; GND, SELECT, UP & DOWN. The GND terminal is connected back to the 'C' or Common terminal on the Control Inputs of the Soundweb device. The 'SELECT' terminal is for the Source Select and is connected back to a numbered Control Input on the Soundweb device. The 'UP' terminal is for the Level Up and is connected back to a second numbered Control Input on the Soundweb device. The 'DOWN' terminal is for the Level Down and is connected back to a third numbered Control Input on the Soundweb device. Each Soundweb London chassis can support connections for up to four BLU-6 or sw9015US controllers.

Note: The Soundweb device must be in 2-wire mode when using these controllers. This is the default mode.



These parameters need to be assigned to Control Inputs within the HiQnet London Architect file.

To do this:

- Open the Design tree.
- Expand the Devices category
- Expand the Device Type category
- Expand the Named Device category
- Expand the Default Config category
- Expand the Control Ports category

You will now see the Control Ports displayed. You will see the twelve Control Inputs and six Control Outputs and any parameter assignments made to them.

To create a new assignment:

Open the Default Control Panel where the control resides. Drag the control from that panel over to the Design tree and drop it on the Control Input. During the drag, the cursor will change to a '+' symbol when you are over a valid drop location. You can expand a Control Input to view what State Variable is attached. To delete an existing parameter assignment, you can simply drag a new parameter on to the Control Input and it will make a new assignment or you can right click on the Control Port and choose 'Delete'.